



Nazare

Evora

Peniche



Algarve

Portugal
13.1.-15.3.2022
> 4.000 km
© Travelmaus.de

Algarve/Portugal 13.1.-15.3.2022 © Travelmaus.de



Algarve Alentejo Portugal*

13.1.-15.3.2022



Peniche
Halbinsel

Alentejo

Insel Baleal

Evora



Bordeira



Monchique



Sagres



Porta da Piedada



Vilamoura



Cacela Velha



Santa Luzia



Portimao
Praia da Rocha



Lagos



Praia Faro



Praia da Monta Rota



Carvoeiro



Ankerfriedhof Barril



Tavira



Ria Formosa



Ria Formosa



Monte Gordo



Monte Gordo



Algarvereise der Travelmäuse 15.1.-15.3.2022 © Travelmaus.de



Chromlech von Almendres



rot 13.1.22- Hinfahrt Faro-Evora, 250 km
grün 14.1.22- Evora - Monsaraz 210 km
blau 15.1.22- Evora - Quarteira 250 km



Cromlech von Xerez





Monsaraz



Alentejo



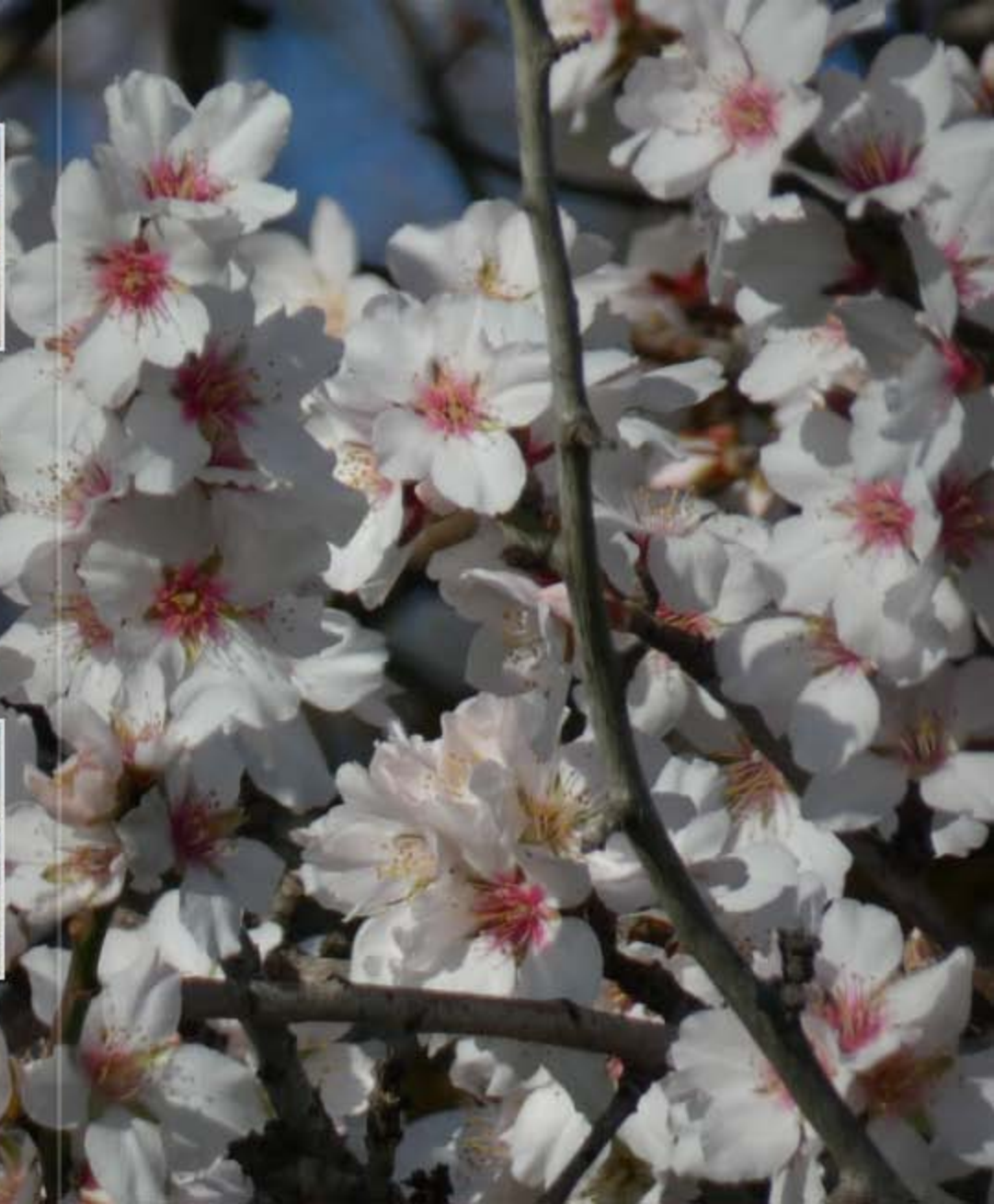


Evora
Knochenkapelle



Evora
Römertempel
Kathedrale







Praia Olhos



PRAIA DOS OLHOS D'ÁGUA



24.1.2022
85 Tageskilometer
Ria Formosa & Fuseta



Fuseta



parque natural
Ria Formosa



Alte-Benafim



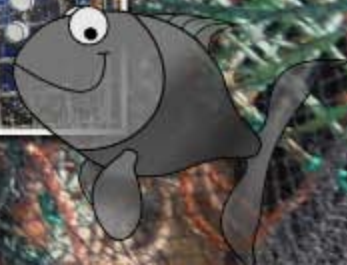
Benafim Restaurant Hamburgo













1.2.2022 - 230 km
Costa Vicentina/Bordeira



Bordeira



Costa Vicentina







Markthalle Loule



gen

hlen





Alentejo





Salema
Saurierspuren





Santa Luzia



09.02.2022
Praia do Barril
& Santa Luzia

parque natural
Ria Formosa



Praia do Barril
Ankerfriedhof





15.02.22 Monte Gordo
Cacela Velha-Santa Luzia



Monte Gordo



Cacela Velha



Gaivota_Restaurant
Santa Luzia





Quinta do Lago







Felsenküste in Peniche



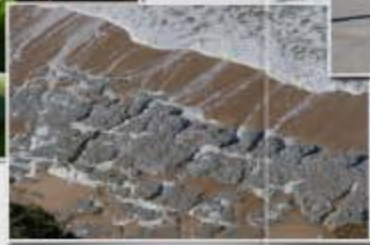


Blick auf Peniche





Costa Vicentina



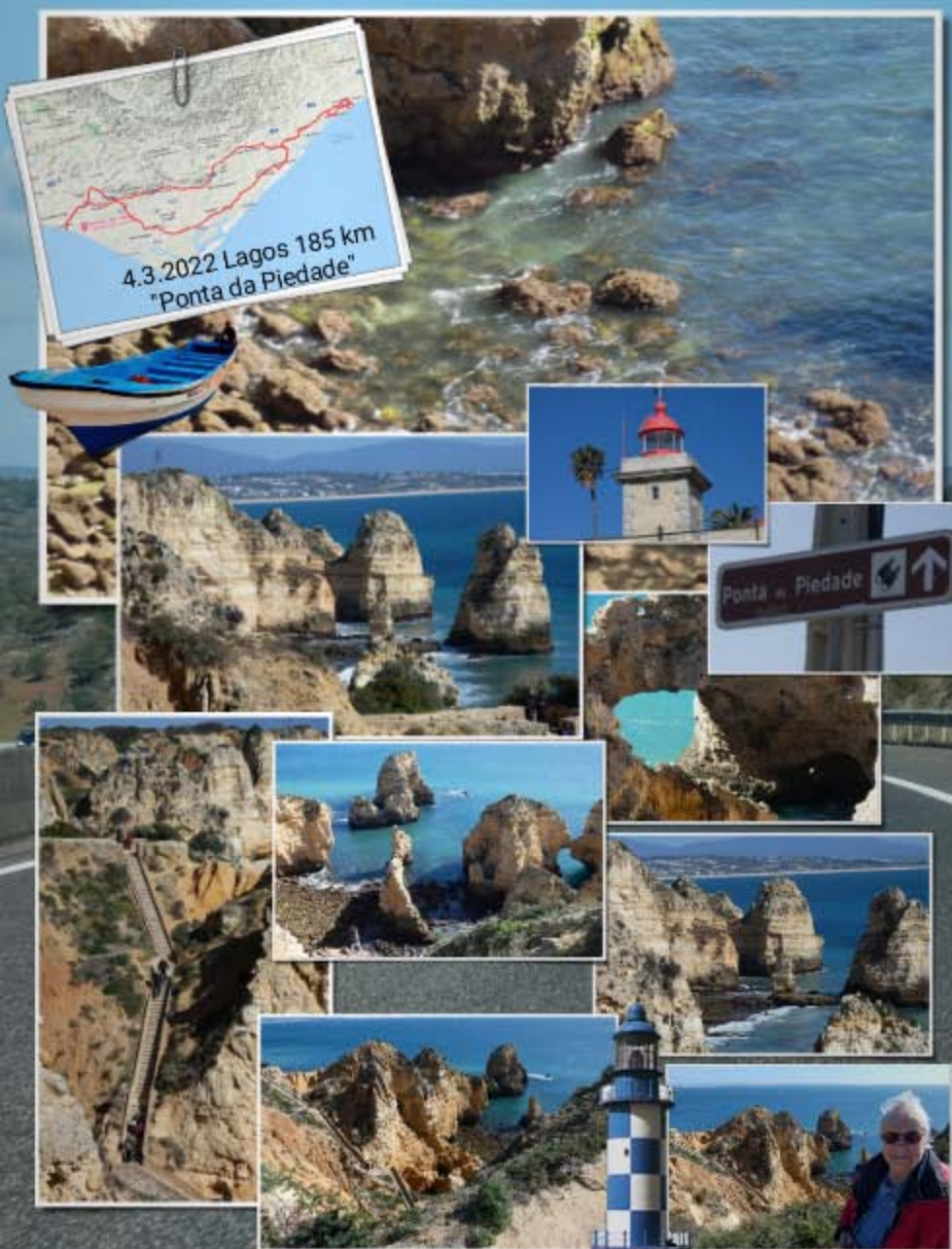


Vilamoura 1.3.2022









4.3.2022 Lagos 185 km
"Ponta da Piedade"

Ponta da Piedade

Lagos



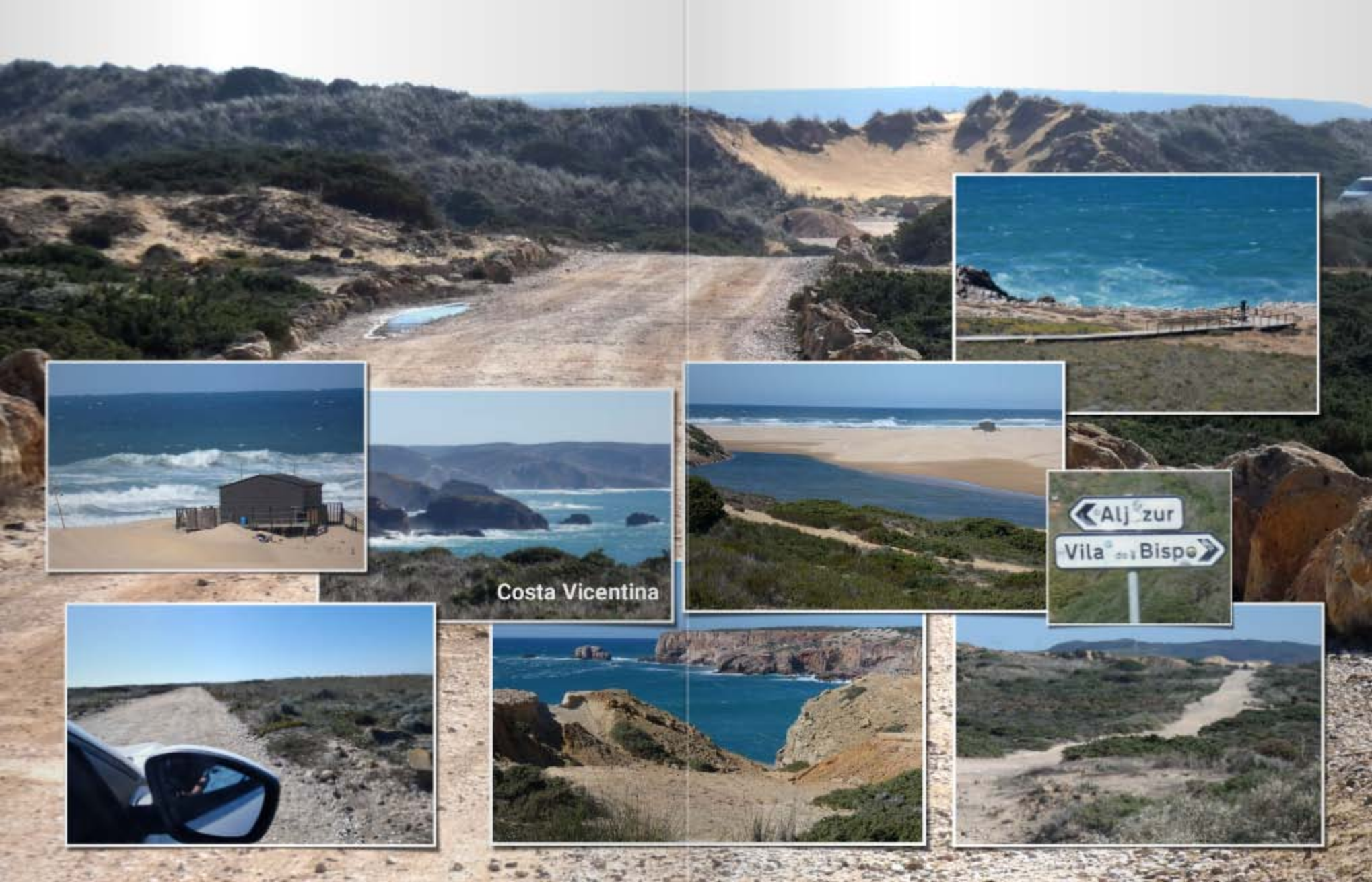
A22
Lagos
(N120) Sines
(N124)
Portimão
Monchique

1000 m









Costa Vicentina

← Alj. zur
Vila do Bispo →





Felsenalgarve



Restaurant in Porches



